

Technical Note

Preparing your Mac OS X operating system before installing FirstClass 7.1

System requirements and recommendations

- Mac OS X, 10.2.3 or higher is required
- HFS+ Mac OS Extended partition is recommended for the executables and the FirstClass post office
- separate direct or network-attached volume large enough to hold the mirrored FirstClass post office is recommended to facilitate online backup procedures
- fast disk storage system is required for systems with a concurrency of more than 300 users, recommended for all

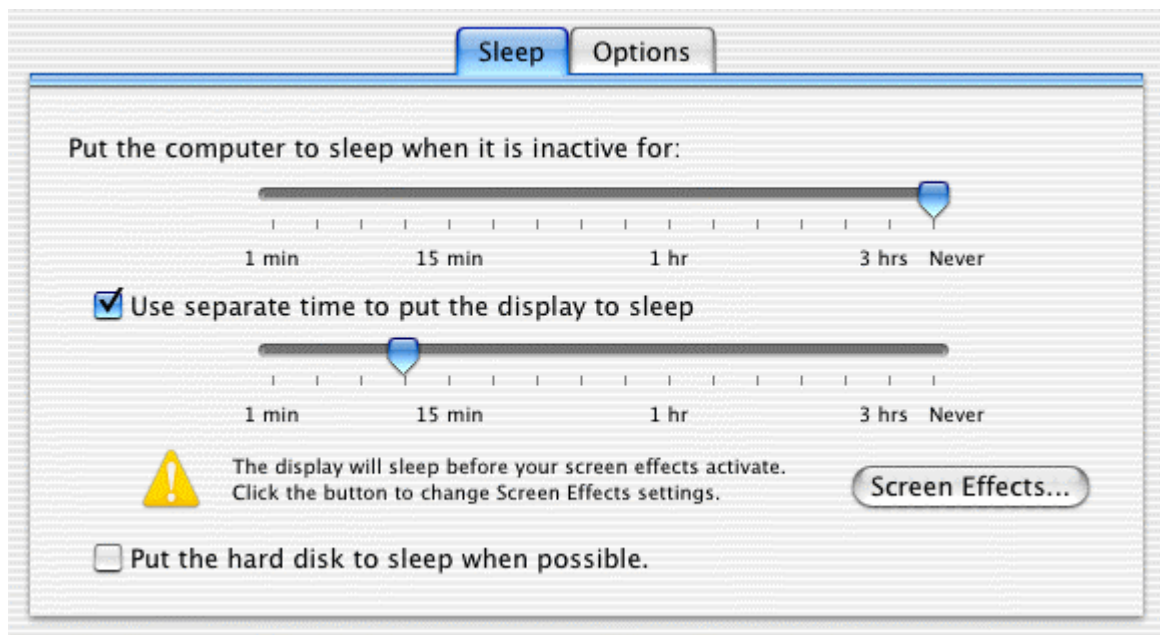
Setting system preferences

Choose Apple menu > System Preferences to access the system preferences forms.

Energy Saver form

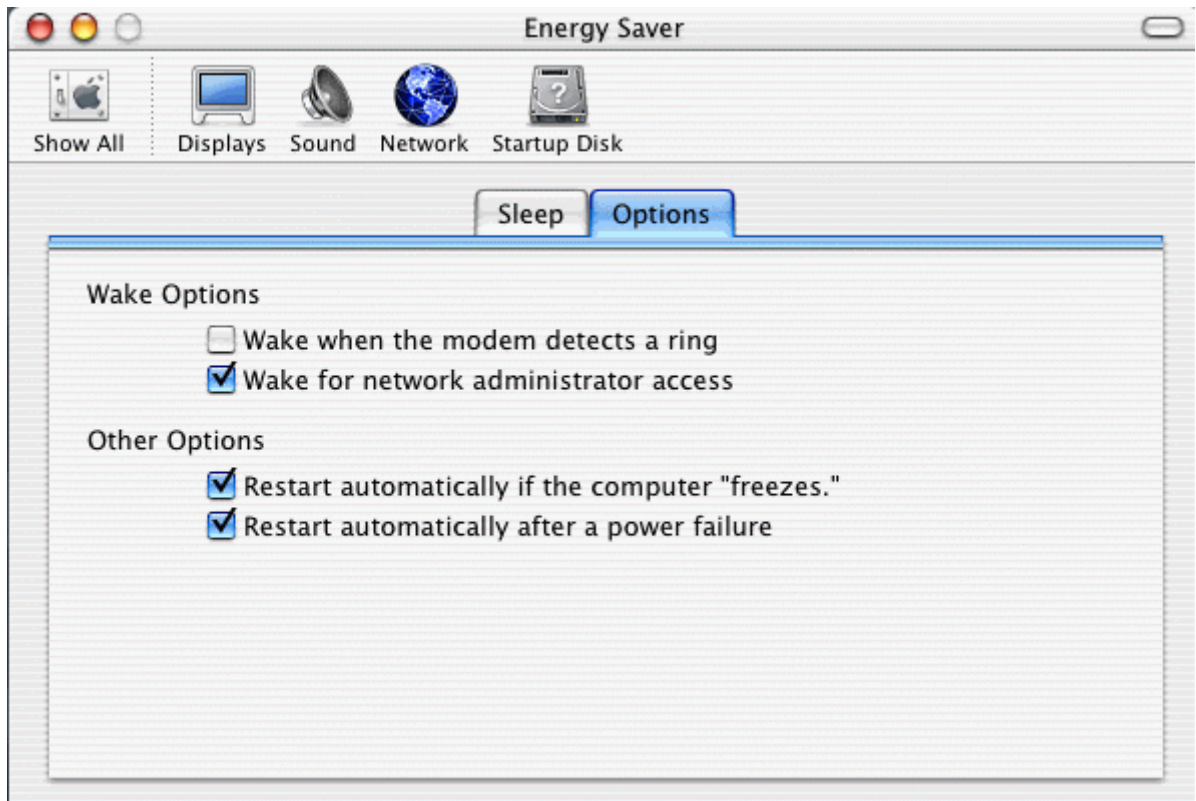
Select Energy Saver in the Hardware section of the forms to access this form, and complete the form as detailed below.

Sleep tab



- set the computer sleep time when inactive to Never
- select Use separate time to put the display to sleep
- set the display sleep time as desired

Options tab



- select Wake for network administrator access
- select Restart automatically if the computer "freezes"

Note

This option is not available on OS X workstation computers

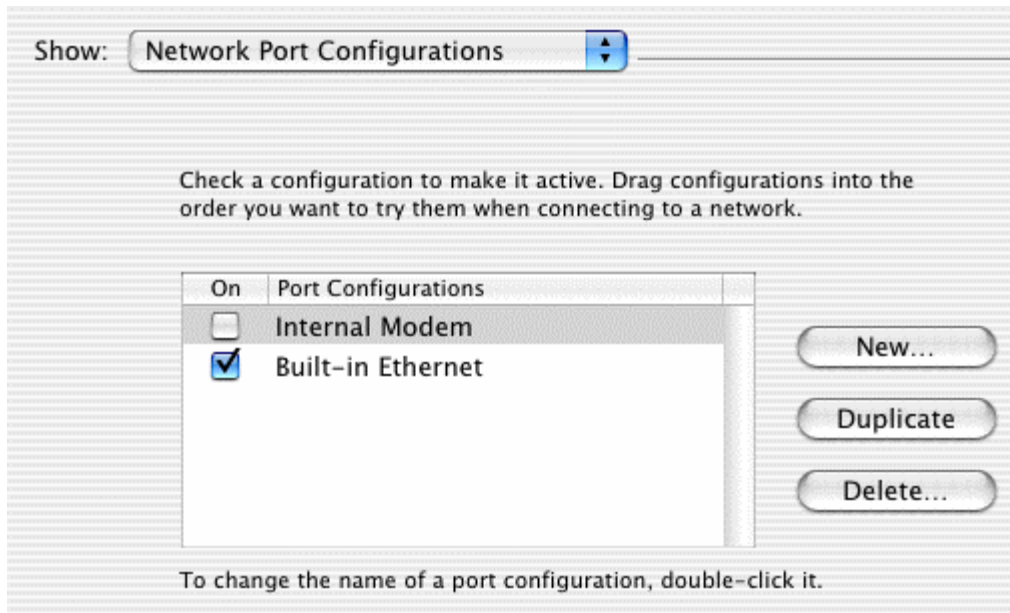
- select Restart automatically after a power failure

Network form

Select Network in the Internet & Network section of the forms to access this form, and complete the form as detailed below.

Network Port Configurations

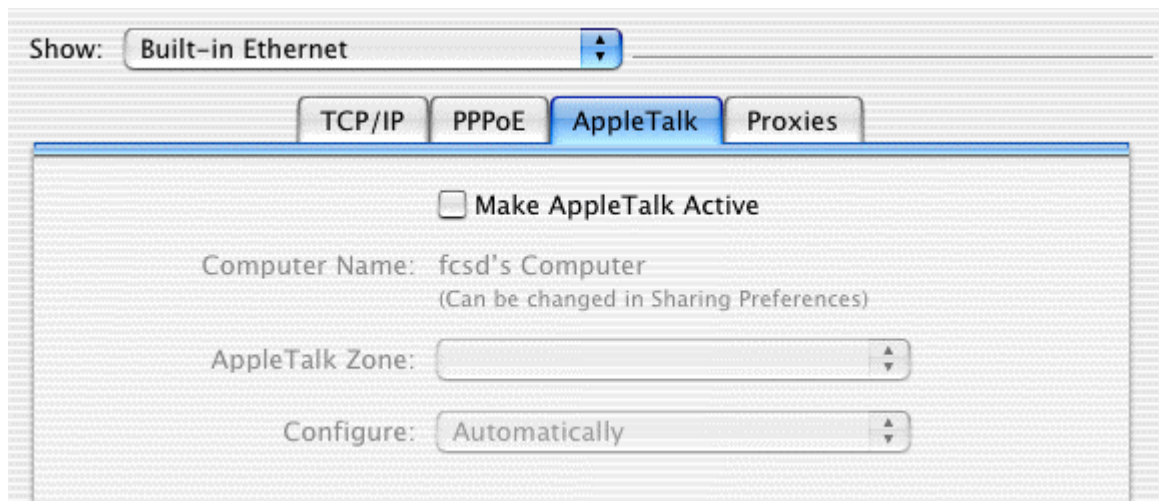
Choose Show Network Port Configurations to access the port configurations form.



Select only the static ports.

Built-in Ethernet

Choose Show Built-in-Ethernet form to access the Built-in Ethernet form.



Select or clear Make AppleTalk Active as required.

Note

AppleTalk is not supported by the FirstClass server. However, OS X Server platforms may enable AppleTalk for other tasks, such as file sharing. Enabling file sharing will impact the peak concurrency and may result in periods of non-response from the server while using the FirstClass client connected to this computer.

You must configure a static (Manual) IP configuration for FirstClass. A second NIC may also be assigned a static IP number for co-location of FirstClass Internet Services. Installing FirstClass Internet Services on the same computer will impact the peak concurrency and may result in periods of non response from the server while using the FirstClass client or the web client connected to this computer.

QuickTime form

Select QuickTime in the Internet & Network section of the forms to access this form, and complete the form as detailed below.

Update tab



The image shows a software window with a tabbed interface. The 'Update' tab is selected and highlighted in blue. The window contains the following elements:

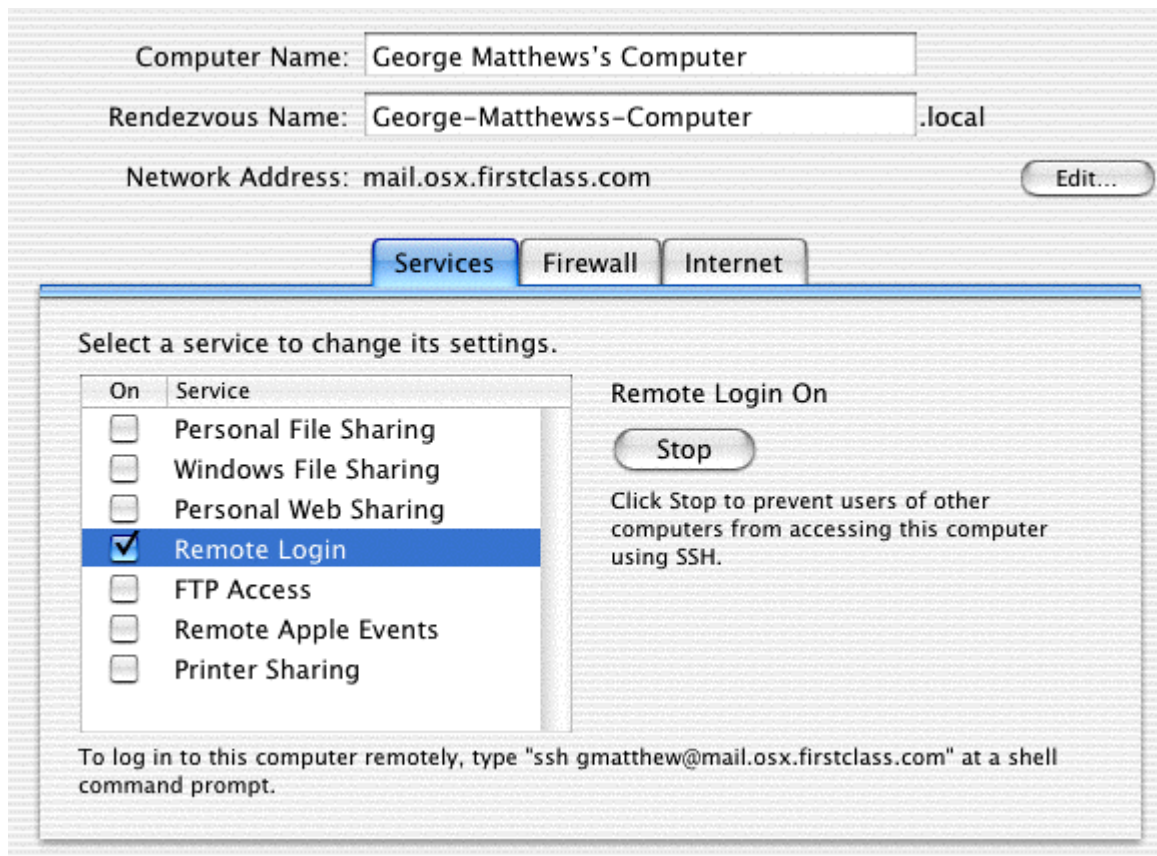
- Four tabs at the top: 'Plug-In', 'Connection', 'Music', and 'Media Keys'.
- The 'Update' tab is active and contains:
 - Two radio button options:
 - Update or install QuickTime software
 - Install new 3rd-party QuickTime software
 - A button labeled 'Update Now...' centered below the radio buttons.
 - A horizontal separator line.
 - A checkbox option:
 - Check for updates automatically
 - Below the checkbox, the text reads: 'Automatically checks for new QuickTime updates and announcements when you're using QuickTime.'

Clear Check for updates automatically

Sharing form

Select Sharing in the Internet & Network section of the forms to access this form, and complete the form as detailed below.

Services tab



- clear all sharing options
- select Remote Login

Note

Remote Login using SSH can be very useful for remote access from another terminal shell.

Firewall tab

We don't recommend or require any Firewall settings. The SSH port will be automatically enabled on the firewall if "Remote Login" is selected. If you choose to enable the extra level of security then all ports associated with Firstclass products must be "Allowed".

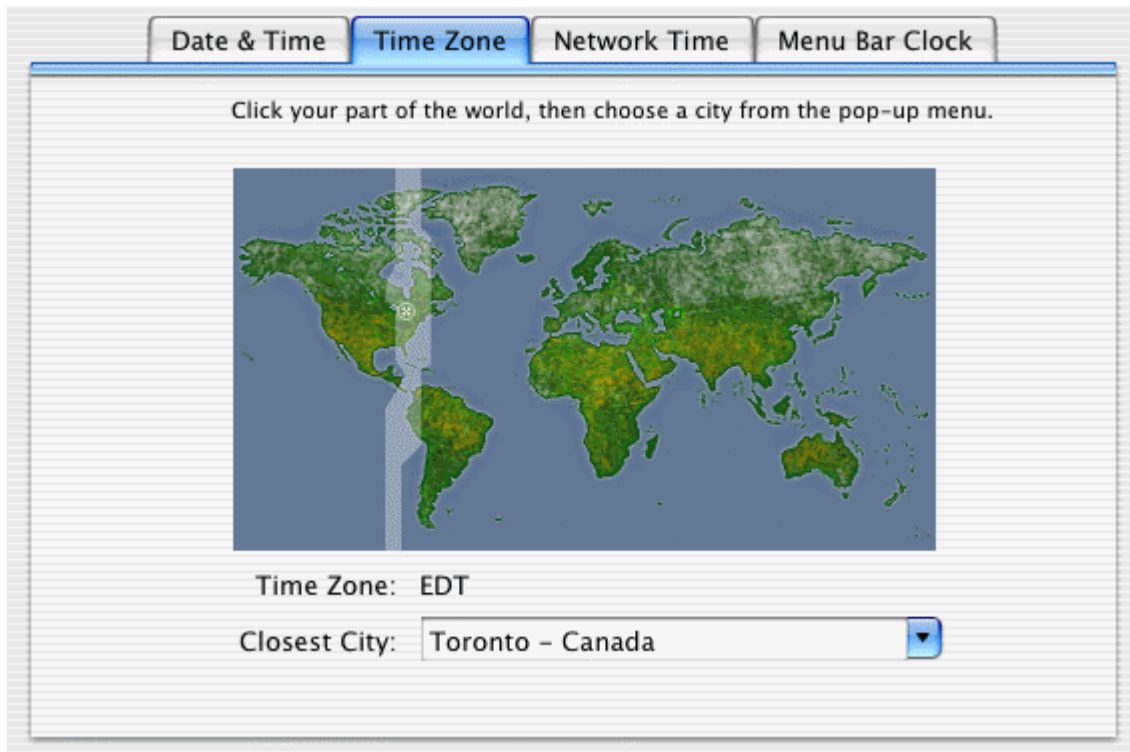
Internet tab

Ensure Internet Sharing is off.

Date & Time form

Select Date & Time in the System section of the forms to access this form, and complete the form as detailed below.

Time Zone tab



Choose the appropriate time zone first.

Date & Time tab



Choose today's date and the appropriate current local time.

Network Time tab



- select Use a network time server
- choose the NTP Server
- click Set Time Now to sync your server

Note

This may not work the first time. The time server is often too busy to sync, but will eventually succeed.

Software Update form

Select Software Update in the System section of the forms to access this form, and complete the form as detailed below.

Update Software tab

Software Update checks for new and updated versions of your software based on information about your computer and current software.

Update Software | Installed Updates

Automatically check for updates when you have a network connection

Weekly

Last Check: Software Update has not been used yet.

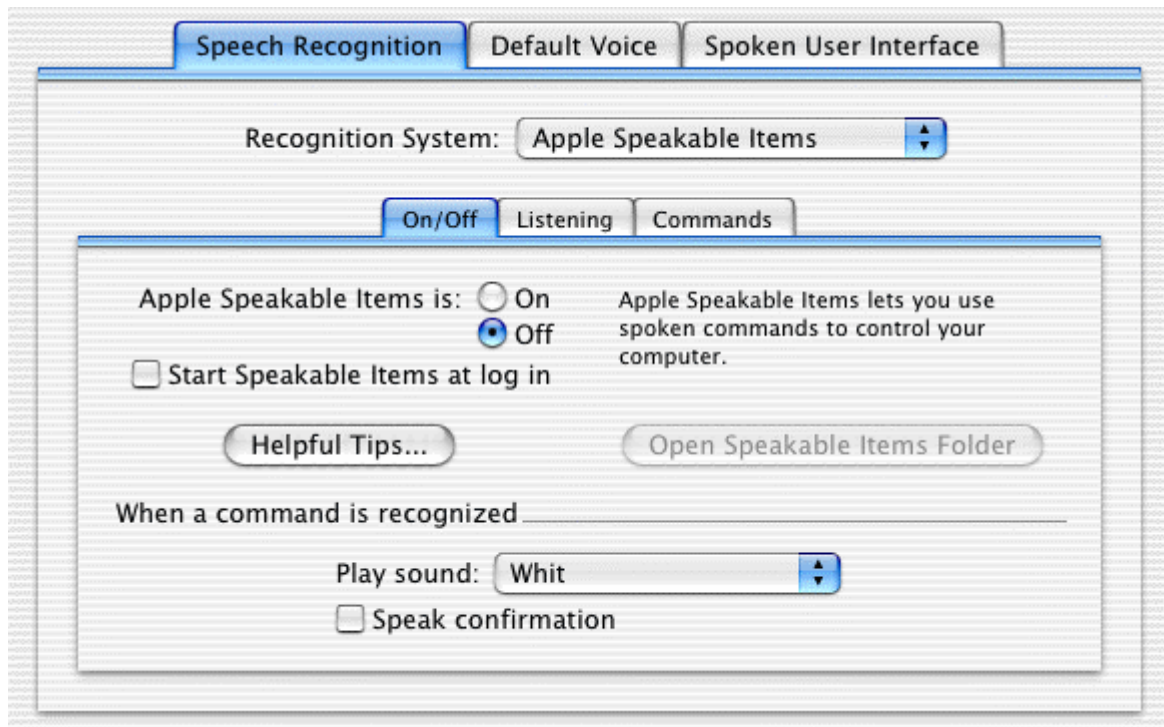
Check Now

Clear Automatically check for updates when you have a network connection.

Speech form

Select Speech in the System section of the forms to access this form, and complete the form as detailed below.

Speech Recognition tab

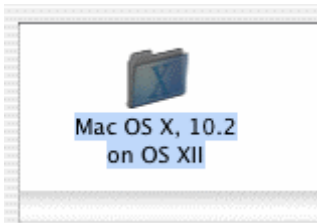


On/Off tab

Select Off for the Apple Speakables items.

Startup Disk form

Select Startup Disk in the System section of the forms to access this form, and check the form as detailed below.



Ensure Startup Disk is set to OS X, 10.2.x.

Setting hard drive details

1. Highlight the Hard Drive icon on your OS X Desktop.
2. Choose File > Get Info to open the hard drive details form.
3. Check or set the options on this form as detailed below.



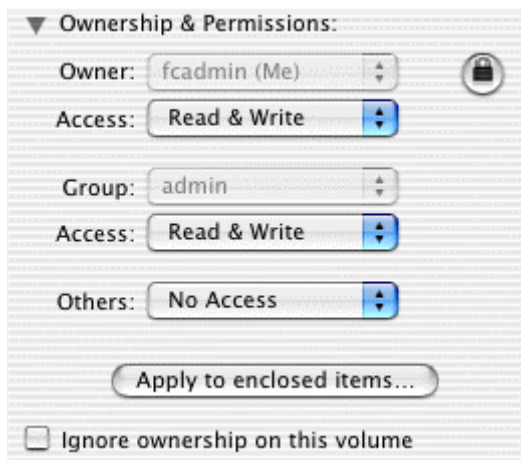
General section

Ensure Format is set to Mac OS Extended.

Content index section

Ensure Status is set to Not indexed.

Ownership & Permissions



Clear Ignore ownership on this volume.

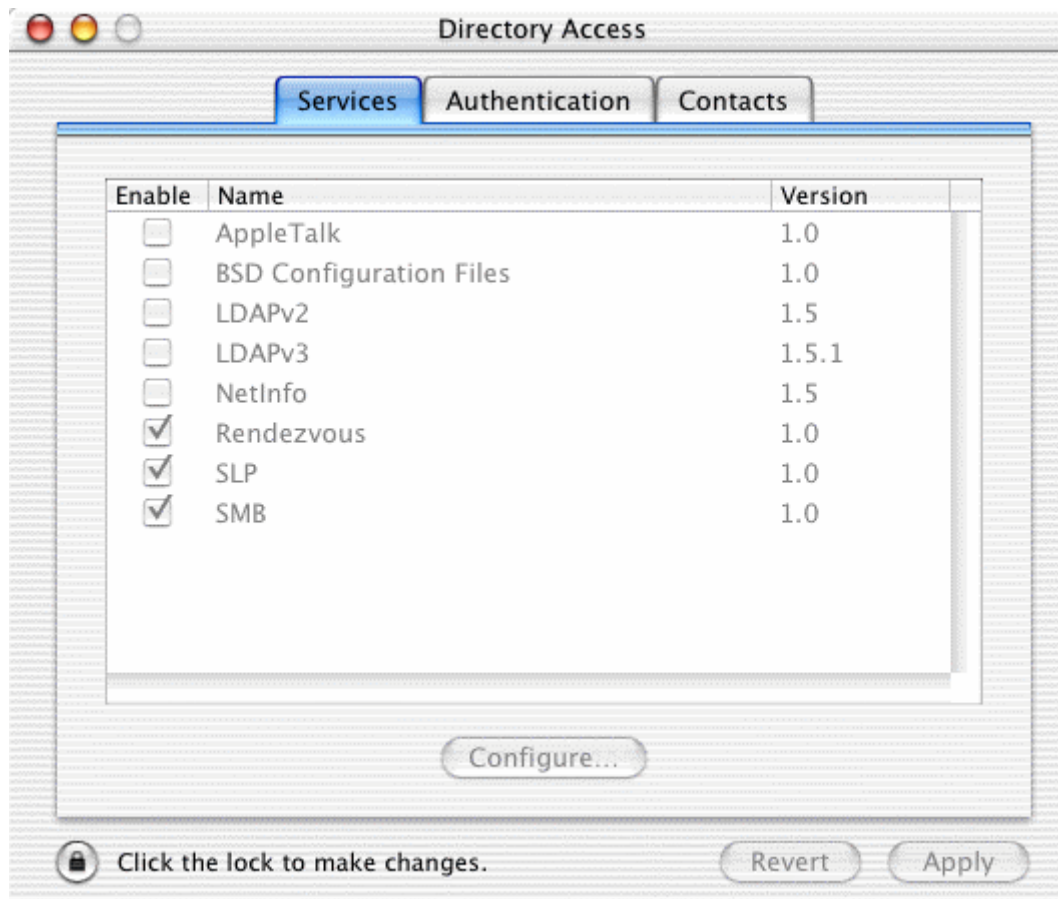
Note

This option is only available on non-root (boot) volumes.

Setting directory access

1. Choose Go > Applications on your OS X Desktop.

2. Select Utilities.
3. Select Directory Access to open the Directory Access form and complete this form as follows:



- clear all LDAP options
- clear or select AppleTalk depending on your needs

Note

AppleTalk is not supported by FirstClass, but may be enabled for other services under light computer concurrency load.

- clear Netinfo

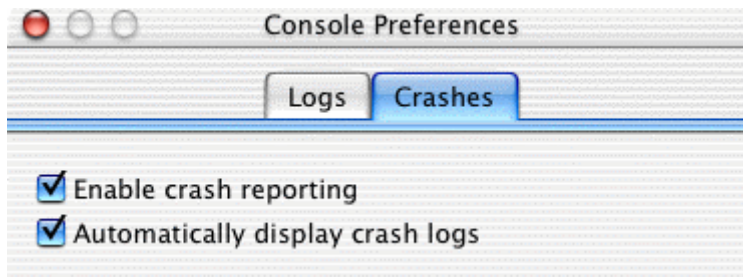
Note

Netinfo must be disabled to avoid frequent pauses.

Setting crash logging options

1. Choose Go > Applications on your OS X Desktop.
2. Select Utilities.
3. Select Console to start the Console application.
4. *When Console appears on your OS X Desktop menu,*
Choose Console > Preferences to open the Console Preferences form and complete this form as detailed below.

Crashes tab



- select Enable crash reporting
- select Automatically display crash logs

Optional

If your OS X machine is a server rather than a workstation,
Review each service and consider the impact on FirstClass concurrency and conflict with any FirstClass Internet Services ports.

